



WORLD'S BEST
ALLOY BULLBARS

East Coast Bullbars (ECB Pty Ltd)

Tel: 07 3897 5700

Fax: 07 3283 1168

ecb@ecb.com.au www.ecb.com.au

29 Snook St
Clontarf QLD 4019
Australia

Po Box 122
Margate QLD 4019
Australia

8F69SY / 8F70SY / NB6F69SY / NBF69SY

REPLACES: 07.09.10
REVISED: 26.02.11

FITTING INSTRUCTIONS

FORD RANGER 11/06-9/11 and MAZDA BT50 11/06-9/11 TYPE 8, 63mm SERIES 2 NUDGE BAR and 76MM NUDGE BAR VEHICLE FRONTAL PROTECTION SYSTEM (VFPS) FOR AIR BAG & ADR COMPLIANT VEHICLES

Check installation hardware before commencing.

1. For Hi-rider and 4WD vehicles remove passenger side tie down bracket and tow hook, four 17mm head bolts. **See figure 1.** On low-rider 2WD vehicles: Tie down and crush brackets may be the same as driver's side. Depending on model the crush bracket maybe welded to the front of the vehicle and therefore does not need to be removed. **See figure 2**
2. Remove driver's side tie down brackets (two 17mm head bolts). If the crush bracket is bolted to the chassis, remove, one inner 17mm head bolt, leave bracket attached to vehicle. Depending on model the crush bracket maybe welded to the front of the vehicle. **See figure 2.**
3. Attach driver's side ECB steel mounting bracket (supplied) to vehicle with angle leg toward outside of vehicle. Use two M12 x 50 x 1.5mm bolts, flat and spring washers (supplied) in rear holes and one M12 x 30 x 1.5mm bolt, flat and spring washer (supplied) in front inner hole. Where crush bracket or tow hook is removed, 4mm steel spacer (supplied) will need to be used **FINGER TIGHTEN ONLY.** **See figure 3.**
4. Attach passenger's side ECB steel mounting bracket (supplied) to vehicle with angle leg toward outside of vehicle. Use two M12 x 50 x 1.5mm bolts, flat and spring washers (supplied) in rear holes and one M12 x 30 x 1.5mm bolt, flat and spring washer (supplied) in front inner hole. **FINGER TIGHTEN ONLY.** An extra 4mm steel spacer (supplied) has been included in fitting kit should vehicle not have crush bracket at time of fitment.
5. Align steel mounting brackets with vehicle checking that brackets are centred front and the space in between the mounts is sufficient for the protection bar to mount on outside.
6. Attach protection bar to outside of steel mounting brackets. Use two 3/8 x 1 1/2 bolts, flat and spring washers (supplied) in rear holes and two 3/8 x 1 1/2 bolts and washers on 200mm wire, spring washers and nuts (supplied) for front holes. **TIGHTEN ALL BOLTS ON STEEL MOUNTING BRACKETS.** Lift protection bar as high as possible for maximum ground clearance.
7. Align protection bar to vehicle. **See figures 4, 6 and 8 for front views and 5, 7 and 9 for side views. TIGHTEN ALL BOLTS.**

ENSURE NUMBER PLATE IS CLEARLY VISABLE

Note: When fitting/refitting the licence plate to the vehicle, ensure there is no obstruction to licence plate vision in accordance with local authorities. If required relocate licence plate to an alternate location.



East Coast Bullbars (ECB Pty Ltd)

Tel: 07 3897 5700

Fax: 07 3283 1168

ecb@ecb.com.au www.ecb.com.au

29 Snook St
Clontarf QLD 4019
Australia

Po Box 122
Margate QLD 4019
Australia

WORLD'S BEST
ALLOY BULLBARS

Further VFPS Notes:

- a) Do not attach VFPS to the vehicle using anchorages not intended for this purpose (e.g. engine mounting bolts).
- b) Do not use this product for any vehicle make or model, other than those specified by the VFPS manufacturer.
- c) Do not remove the plaque or label from the VFPS.
- d) Do not modify the structure of the VFPS in any way.
- e) No accessory or fitment should project forward of the VFPS forward profile.
- f) Ensure these instructions are left with vehicle owner and/or operator.

ENSURE THESE INSTRUCTIONS ARE LEFT WITH VEHICLE OWNER AND/OR OPERATOR

IMPORTANT INFORMATION

Periodically check bolts and nuts for correct tightness, especially if travelling on rough roads

FITTING KIT

1 – Pair steel mounting brackets.	2 – 3/8 x 1 1/2 bolts.
2 – 4mm steel spacer plate.	2 – 3/8 x 1 1/2 bolts and washers on 200mm wire.
4 – M12 x 1.5 x 50mm bolts.	6 – 3/8 flat washers.
2 – M12 x 1.5 x 30mm bolts.	4 – 3/8 spring washers.
6 – M12 flat washers.	4 – 3/8 nuts.
6 – M12 spring washers.	

17mm head bolts

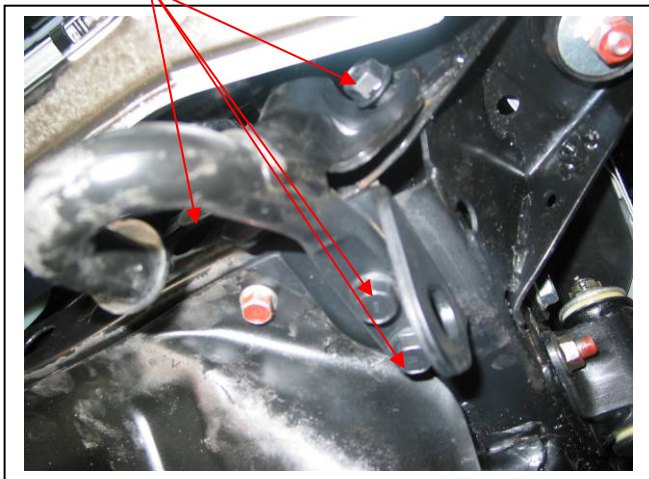


Figure 1 – Passenger side shown

Crush bracket (welded to vehicle)

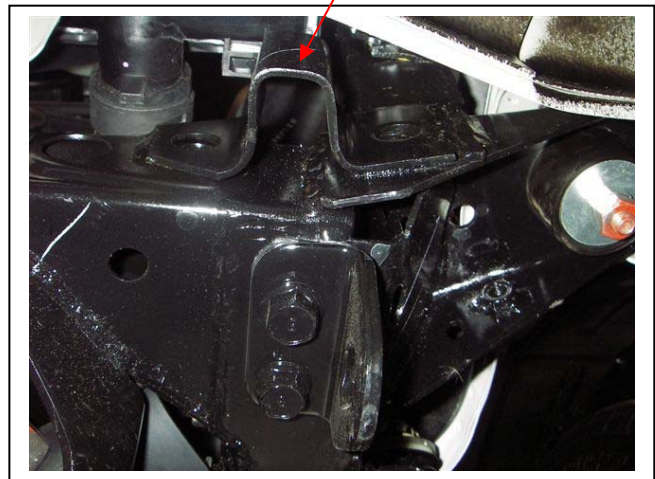


Figure 2 – Driver side shown



East Coast Bullbars (ECB Pty Ltd)

Tel: 07 3897 5700

Fax: 07 3283 1168

ecb@ecb.com.au www.ecb.com.au

29 Snook St
Clontarf QLD 4019
Australia

Po Box 122
Margate QLD 4019
Australia

WORLD'S BEST
ALLOY BULLBARS

M12 x 30 bolt

M12 x 50 bolts

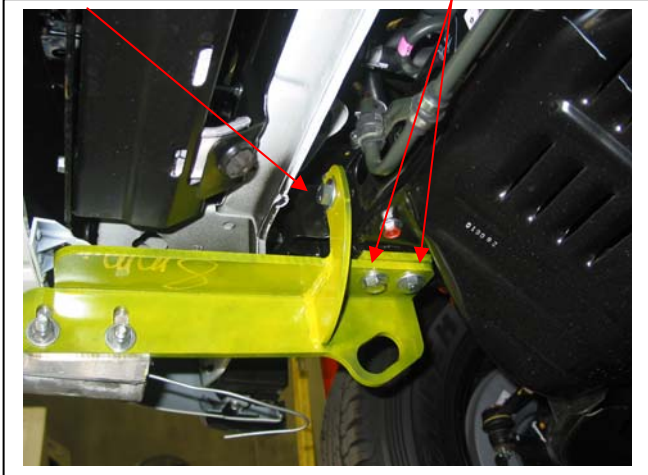


Figure 3 – Drivers side shown



Figure 4 – Type 8 front view shown

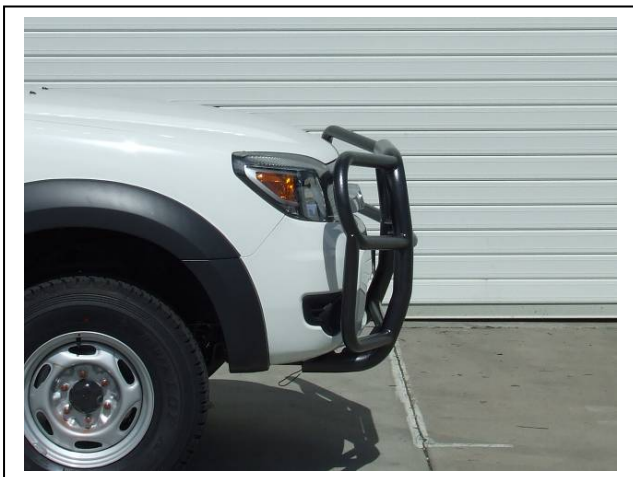


Figure 5 – Type 8 side view shown



Figure 6 – Front 2 side view

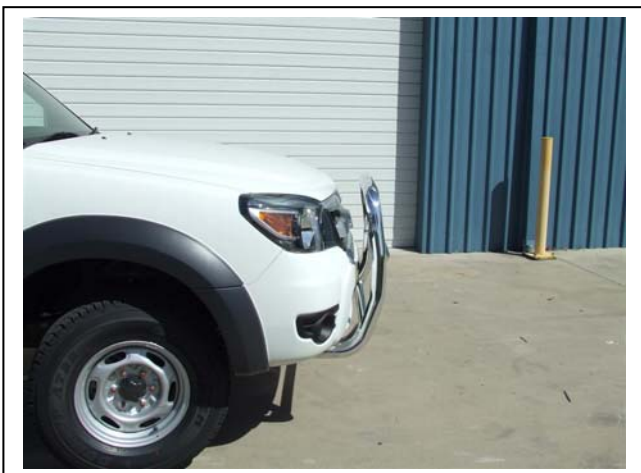


Figure 7 – Series 2 side view

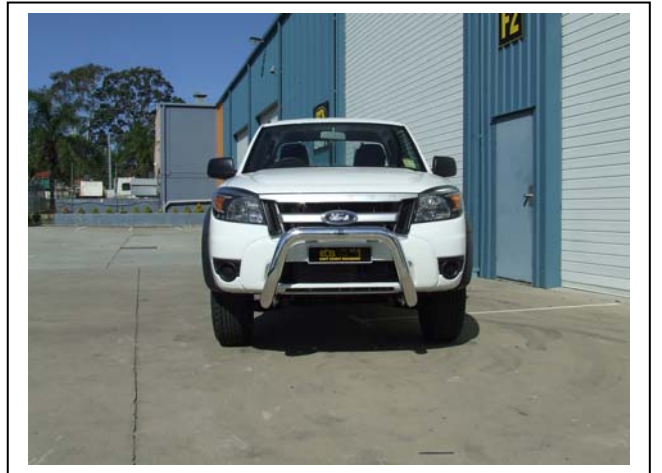


Figure 8 - Nudge bar front view



**WORLD'S BEST
ALLOY BULLBARS**

East Coast Bullbars (ECB Pty Ltd)

Tel: 07 3897 5700

Fax: 07 3283 1168

ecb@ecb.com.au www.ecb.com.au

29 Snook St
Clontarf QLD 4019
Australia

Po Box 122
Margate QLD 4019
Australia





**WORLD'S BEST
ALLOY BULLBARS**

East Coast Bullbars (ECB Pty Ltd)

Tel: 07 3897 5700

Fax: 07 3283 1168

ecb@ecb.com.au www.ecb.com.au

29 Snook St
Clontarf QLD 4019
Australia

Po Box 122
Margate QLD 4019
Australia

We value your comments

Dear Fitter,

ECB would like to know how you went with the installation of this product. We value your comment and may need to contact you to clarify some details so please complete your contact details clearly.

We would appreciate if you could complete as many of the following details as possible.

Your Name:	Your contact No.
Product Part No.	Product Invoice No.
Product Description:	Make, model, and year of vehicle:
Product Work Order No.	Company your from/Company product purchased from:

Date of Fitment: ____/____/____

Was the fitting hardware supplied complete? Yes No

If no what was not supplied

Did the installation go well? Yes No

Please provide comments

Please draw diagrams if you need to.

Post to
Reply Paid 122
PO Box 122
Margate QLD 4019

Fax to
(07) 3283 1168



**WORLD'S BEST
ALLOY BULLBARS**

East Coast Bullbars (ECB Pty Ltd)

Tel: 07 3897 5700

Fax: 07 3283 1168

ecb@ecb.com.au www.ecb.com.au

29 Snook St
Clontarf QLD 4019
Australia

Po Box 122
Margate QLD 4019
Australia



WORLD'S BEST
ALLOY BULLBARS

East Coast Bullbars (ECB Pty Ltd)

Tel: 07 3897 5700

Fax: 07 3283 1168

ecb@ecb.com.au www.ecb.com.au

29 Snook St
Clontarf QLD 4019
Australia

Po Box 122
Margate QLD 4019
Australia

DESPATCH CHECKLIST

8F69SY / 8F70SY / NB6F69SY / NBF69SY

Work Order #	
Finish:	
Transport:	
Due Date:	

- 1 – Pair ECB steel mounting bracket
- 1 – Bolt Kit (including two 4mm steel spacer plates)

**See other side of
this page for
photos of all
mounts**



Is this product “the best it can be” Yes _____ / _____
Wrapper’s initials / Checker initials
 If NO fix before continuing

All parts checked and completed by:

Nut and bolts: _____ Date __/__/__

Order control: _____ Date __/__/__

Final wrap check: _____ Date __/__/__



East Coast Bullbars (ECB Pty Ltd)

Tel: 07 3897 5700

Fax: 07 3283 1168

ecb@ecb.com.au www.ecb.com.au

29 Snook St
Clontarf QLD 4019
Australia

Po Box 122
Margate QLD 4019
Australia

WORLD'S BEST
ALLOY BULLBARS

